

THE NUDE

IN THE XX AND XXI CENTURY

Curated by Jane Neal



Kees van Dongen, *Femme Nue Blonde*, 1906

Sotheby's S|2 London

31 St George Street, Mayfair, London

Exhibition: 19 November 2015–15 January 2016

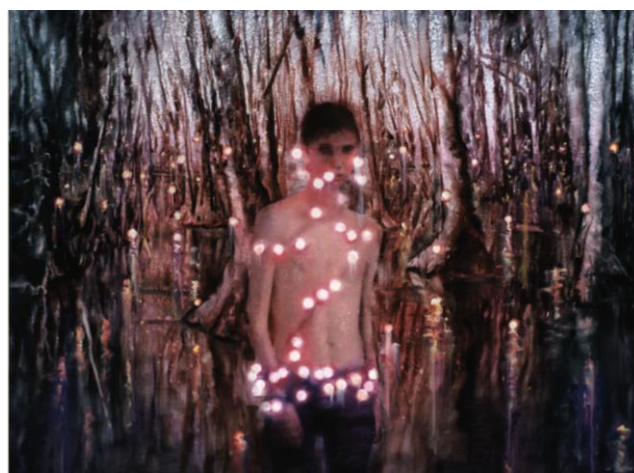
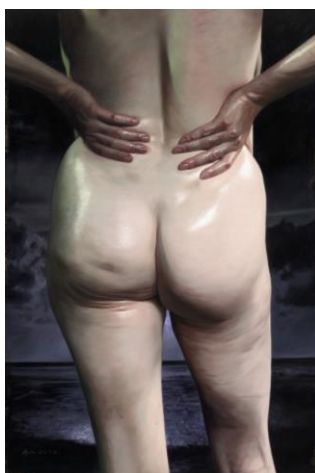
Marina Abramović, Zsolt Bodoni, Armin Boehm, Louise Bourgeois, Cecily Brown, Paul Cézanne, Mircea Cantor, Tamara de Lempicka, Marlene Dumas, Martin Eder, Tracey Emin, Lucian Freud, Robert Fry, Alberto Giacometti, Antony Gormley, Stéphane Graff, Gustav Klimt, Justin Mortimer, Edvard Munch, Tim Noble and Sue Webster, Pablo Picasso, Dione Roach, Egon Schiele, Dennis Scholl, Attila Szucs, Alexander Tinei, Kees van Dongen, Caroline Walker, Tom Wesselmann, Hugo Wilson and Jonathan Yeo.

The naked human body has the power to compel, to shock and to seduce. From the heroic, muscular male forms of Antiquity to the reclining odalisques of 19th-Century painting, nude figures have dominated the artistic traditions of the Western world. Curated by Jane Neal, *The Nude in the XX and XXI* brings together work by artists that revolutionised this tradition in the Modern era with new art that explores today's attitudes to the body in the raw. The 31 artists selected for the show range from pioneering painters Egon Schiele and Lucien Freud to artists including Louise Bourgeois, Marina Abramović and Tracy Emin, whose intimate explorations of the female body challenge centuries of objectification of women by men in art. Recent and specially commissioned works featured in the exhibition respond to our complex relationship with the naked body in today's culture. These include the renowned British portrait artist Jonathan Yeo's study of the of the impact of plastic surgery; new work by the German artist Martin Eder, who looks to the generation "who grew up with Internet porn and have a completely different relationship with the nude"; and paintings by Caroline Walker, who asks "what is it to be a woman and be looked at by men?".



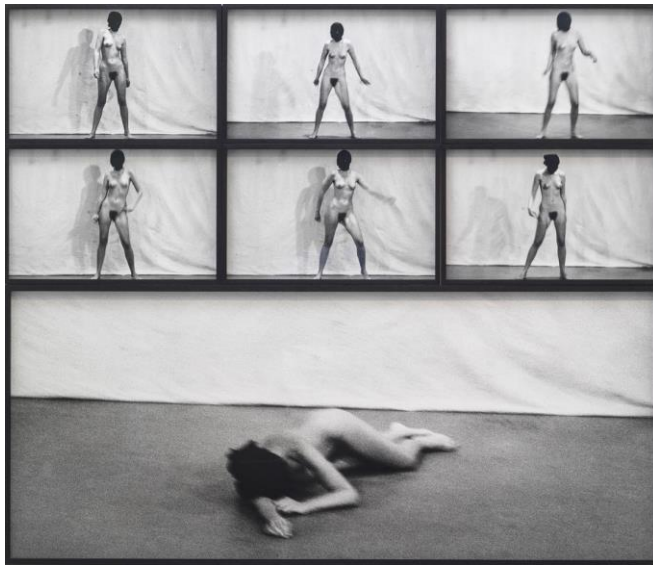
Picture Captions:
Pablo Picasso,
*Femme
Endormie*, 1933
(left)

Tamara de
Lempicka, *Les
deux Amies V*,
1974 (right)

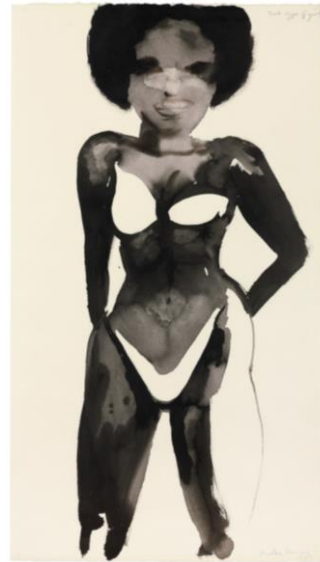


Martin Eder, *Full
Moon/Holiday*
Oil, 2015 (left)

Attila Szucs, *Stars
in a Moorland*,
2015 (right)



Marina Abramovic, *Freeing the Body*, 1974/2014 (left)



Marlene Dumas, *That Type of Girl*, 1989 (right)



Jonathan Yeo, *Neo Plane Implant Exchange II*, 2012 (left)



Tracey Emin, *The Perfect Dream*, 2014 (right)



Noble & Webster, *Two Declining Nudes*, 2014 (left)



Hugo Wilson, *Untitled Nude*, 2015 (right)

About Jane Neal:

An independent curator and writer, Jane Neal is a leading expert on the contemporary art scene in Eastern Europe. She co-authored 'Cities of the Future: 21 Century Avant Gardes' for Phaidon and curated Nightfall: New Tendencies in Figurative Painting, which featured 28 of the world's leading

and most prominent emergent painters for MODEM Centre for Contemporary Arts, Debrecen, Hungary, and which travelled to the Rudolfinum in Prague in 2013.

About S|2

S|2 gallery, with spaces in New York and London, has quickly earned a reputation for staging innovative exhibitions by both established and emerging contemporary artists. Exhibition programming has included shows dedicated to the work of individual artists such as: Jean-Michel Basquiat, Joseph Beuys, Keith Haring, Yayoi Kusama, Claude and François-Xavier Lalanne, Yoshitomo Nara, and Banksy, to shows curated by art world figures including Vito Schnabel, Jane Neal and Steve Lazarides. With dedicated gallery spaces in New York and London designed by leading architects Richard Gluckman and David Kohn, the S|2 team has also organized a number of pop-up exhibitions in Los Angeles, the San Francisco Bay Area, Paris and Hong Kong. In addition to gallery programming, the S|2 team also facilitates bespoke private acquisitions and sales. Learn more at <http://www.sothebys.com/S2>

Images are available upon request

All catalogues are available online at www.sothebys.com or through Sotheby's Catalogue iPad App.

#

#

#